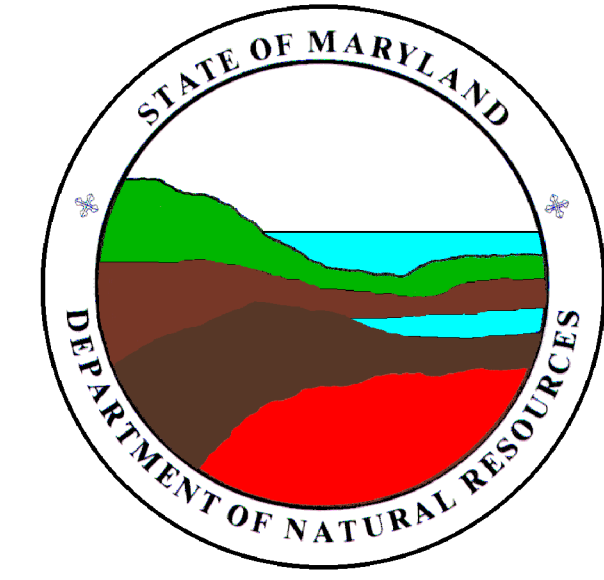


BALTIMORE WEST QUADRANGLE
MARYLAND
7.5 MINUTE SERIES (ORTHOPHOTOQUAD)



State of Maryland
Parris N. Glendening, Governor
Kathleen Kennedy Townsend, Lt. Governor
Department of Natural Resources
J. Charles Fox, Secretary
Karen M. White, Deputy Secretary
Resource Assessment Service
Paul O. Massicot, Director
Maryland Geological Survey
Emery T. Cleaves, Director



Shoreline Changes
Baltimore West Quadrangle, MD

Compiled by

Maryland Geological Survey
Coastal and Estuarine Geology Program
2300 St. Paul Street
Baltimore, Maryland 21218
Telephone: (410) 554-5500
Website: www.mgs.md.gov

2001

LEGEND

-  1974 Shoreline
-  1994 Shoreline

SOURCES OF DATA

Base Image
Composite of resampled digital orthophoto quarter quads (Baltimore West - NE, NW, SE, SW) produced by the Maryland Department of Natural Resources (DNR) from aerial photography flown on April 4, 1994

Shorelines
1974 - National Oceanic and Atmospheric Administration, National Ocean Service T-sheet listed below; digitized using GSMAP or AutoCAD

T-sheet	Date of	
	Field Edit	Photography
TP-00836	1974	1974

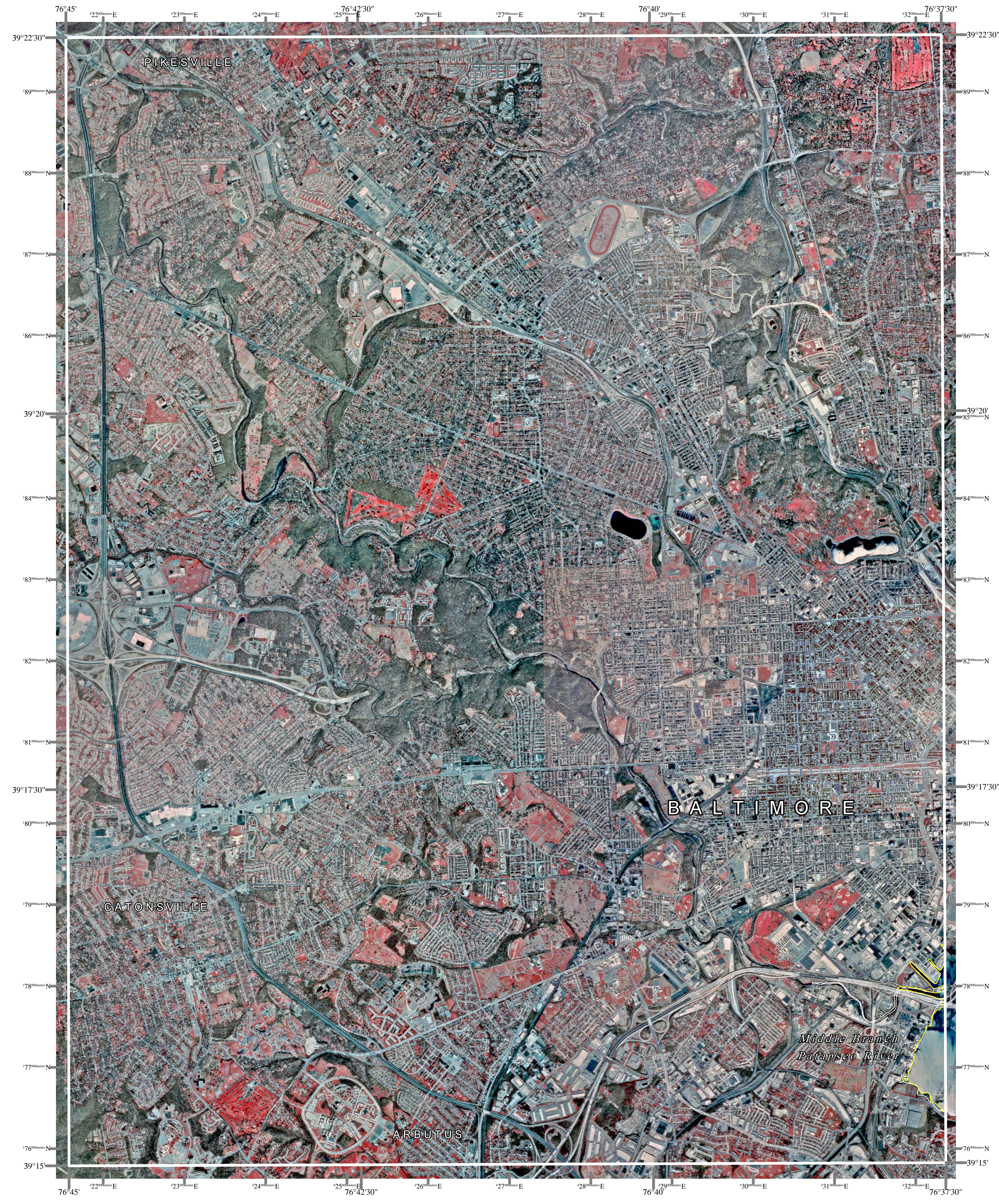
1994 - orthophotoquad shoreline extracted from a DNR digital wetlands delineation based on photo interpretation of digital orthophoto quarter quads

ACKNOWLEDGMENTS

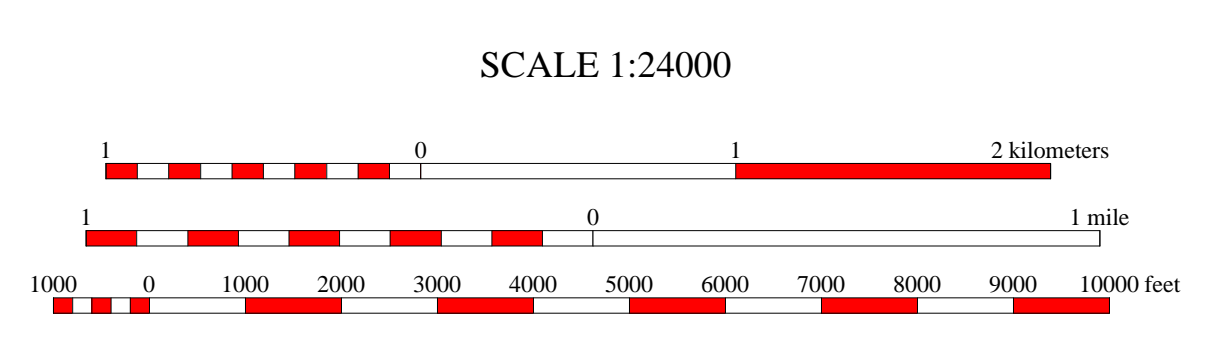
This map was prepared using the geographic information system TNTmips by MicroImages, Inc.
Partial funding was provided by a grant from the National Oceanic and Atmospheric Administration (Award No. NA 07OZ0118), administered by the Maryland Department of Natural Resources, Coastal Zone Management Program (CZM Grant M01-056 CZM 040).

The facilities and services of the Maryland Department of Natural Resources are available to all without regard to race, color, religion, sex, sexual orientation, age, national origin, or physical or mental disability.

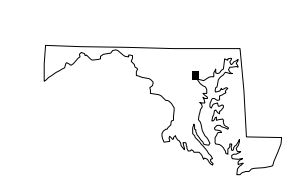
This document is available in alternative format upon request from a qualified individual with a disability.



North American Datum of 1983 (NAD 83)
Projection and 1000-meter grid ticks:
Maryland State Plane Coordinate System



HORIZONTAL DATUM NAD 83



BALTIMORE WEST, MD
MGS-01-010-1
Second Edition
DATE OF PHOTOGRAPHY
April 4, 1994

1	2	3
4	5	6
7	8	

- 1 Reisterstown
- 2 Cockeysville
- 3 Towson
- 4 Ellicott City
- 5 Baltimore East
- 6 Savage
- 7 Relay
- 8 Curtis Bay

INDEX TO ADJOINING 7.5' MAPS

