

POINT LOOKOUT QUADRANGLE  
MARYLAND  
7.5 MINUTE SERIES (ORTHOPHOTOQUAD)



State of Maryland  
Parris N. Glendening, Governor  
Department of Natural Resources  
Sarah J. Taylor-Rogers, Secretary  
Resource Assessment Service  
Paul Massicot, Director  
Maryland Geological Survey  
Emery T. Cleaves, Director





Shoreline Changes  
Point Lookout Quadrangle, MD

Compiled by

Maryland Geological Survey  
Coastal and Estuarine Geology Program  
2300 St. Paul Street  
Baltimore, Maryland 21218  
Telephone: (410) 554-5500  
Website: www.mgs.md.gov

2000

LEGEND

-  1849 Shoreline
-  1942 Shoreline
-  1955 Shoreline
-  1993 Shoreline

SOURCES OF DATA

Base Image  
Composite of resampled digital orthophoto quarter quads (Point Lookout - NW, SW) produced by the Maryland Department of Natural Resources (DNR) from aerial photography flown on April 8, 1993

Shorelines  
1849 - Historical Shorelines CZM Map 18A (Maryland Geological Survey, 1975); digitized using AutoCAD

1942, 1955 - National Oceanic and Atmospheric Administration - National Ocean Service T-sheets listed below; digitized using GSMAP or AutoCAD

T-sheet	Field Edit	Date of Photography
T-8148	1942	1942
T-11289	none	1953 - 1955
T-11290	none	1953 - 1955

1993 - orthophotoquad shoreline extracted from a DNR digital wetlands delineation based on photo interpretation of digital orthophoto quarter quads

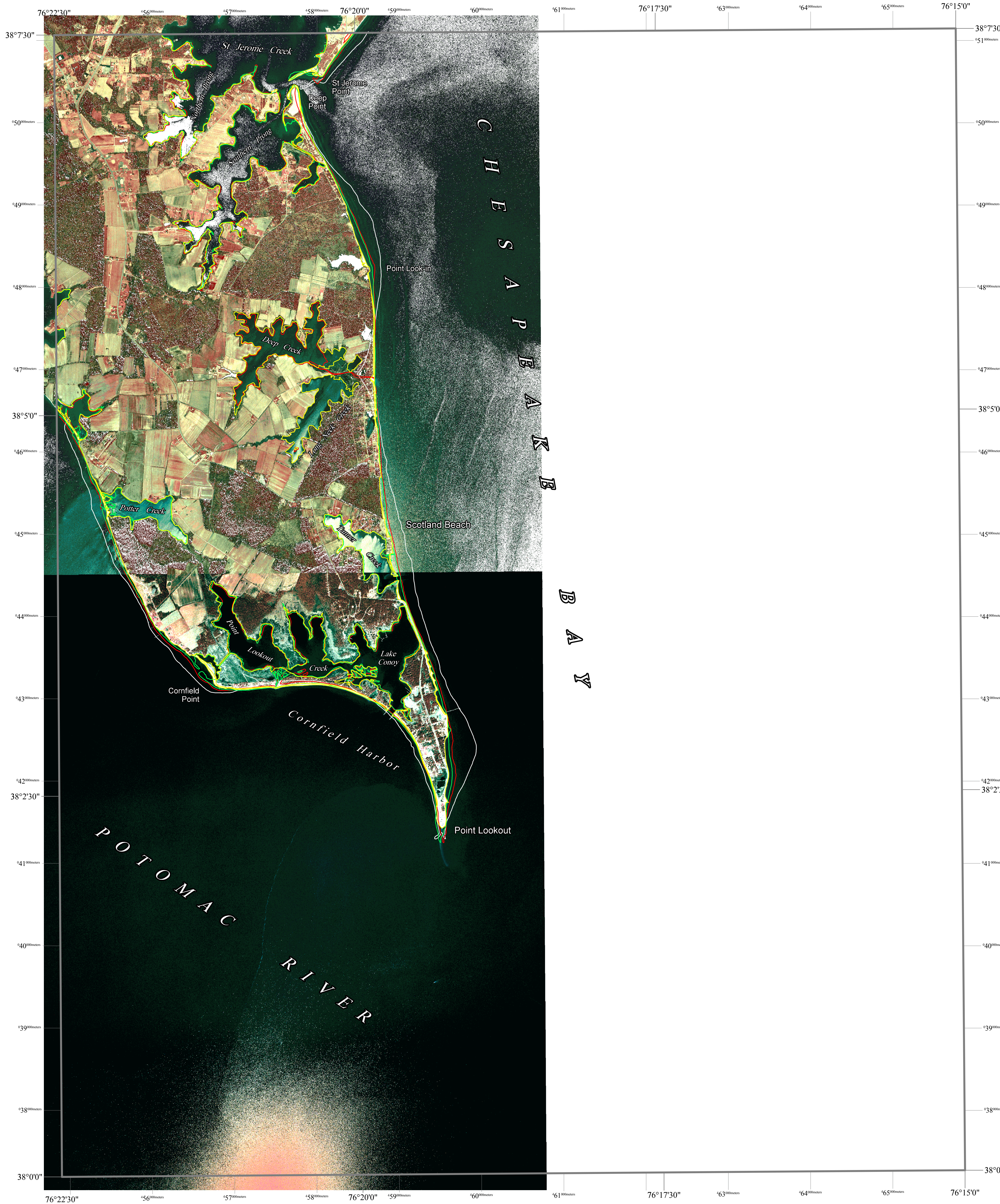
ACKNOWLEDGMENTS

This map was prepared using the Map and Image Processing System (MIPS) by MicroImages, Inc.

Partial funding was provided by a grant from the National Oceanic and Atmospheric Administration (Award No. NA 87OZ0236), administered by the Maryland Coastal Zone Management Program, Department of Natural Resources (CZM Grant M00-051 CZM 031).

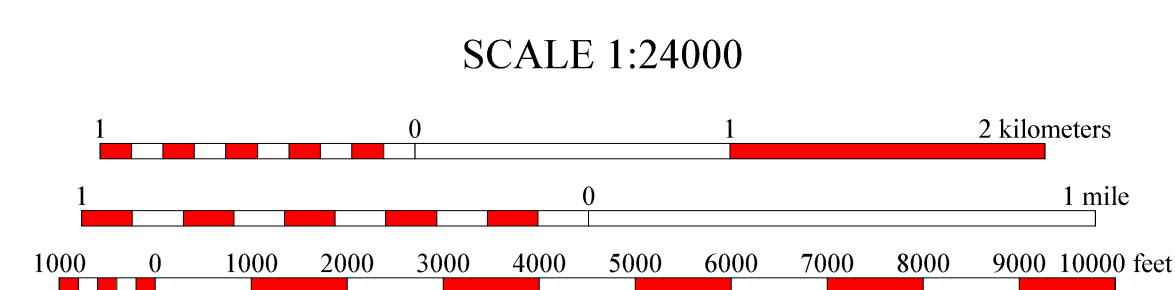
*The facilities and services of the Maryland Department of Natural Resources are available to all without regard to race, color, religion, sex, sexual orientation, age, national origin, or physical or mental disability.*

*This document is available in alternative format upon request from a qualified individual with a disability.*

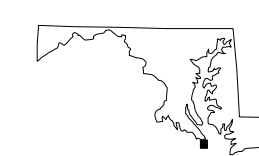


North American Datum of 1983 (NAD 83)  
Projection and 1000-meter grid ticks:  
Maryland State Plane Coordinate System

POINT LOOKOUT, MD  
MGS-00-018-1  
Second Edition  
DATE OF PHOTOGRAPHY  
April 8, 1993



HORIZONTAL DATUM NAD 83



1	2	3
4	5	6
7	8	

INDEX TO ADJOINING 7.5' MAPS

